



Fully integrated Rebar Detector

Get the most trusted instrument for rebar detection, cover depth and rebar diameter measurements.

The challenge

Concrete structures contain reinforcement bars to strengthen the construction. The Profoscope instruments are used to accurately determine the location of rebars and their cover depth beneath the surface. The instruments can also assess the rebar diameter. The Profoscope's rebar detection function and its capability of separating rebars which are located close to each other are groundbreaking.

The Profoscope Solution

Profoscope has a unique real-time rebar-visualization, allowing the contractor to actually "see" the location of the rebar beneath the concrete surface. This is coupled with rebar-proximity indicators and optical and acoustical locating aids.

The Profoscope+ has all the features of the classic Profoscope. In addition, the instrument can record measurement data, manually or automatically. This increases testing efficiency on the construction site significantly. The included software tool allows post-processing or exporting of the collected data.

Benefits to the Customer

Versatility; rebar location and orientation, cover measurement and rebar diameter assessment all provided by a single, fully integrated, cordless instrument.

Ease of use; the intuitive user interface and the real-time visualization of the rebars make the instrument very easy to use.

Durability; Sealed housing for use in rough environment with replaceable protection cover for long lasting performance, over a wide temperature range.

Memory functions (Profoscope+ only); Two different modes of operation are supported:

1. Manual data storage allows the user to save concrete cover and rebar diameter on individually chosen spots.
2. Automatic data storage is especially designed for surface scans. Every time a rebar is detected, the cover value is stored automatically.

Data export and analysis (Profoscope+ only); The ProfoLink software offered by Proceq is a professional tool to analyze the measurement results.

Fully-Integrated, Cordless Design



The Profoscope is designed for single handed operation. All functions can be programmed/activated using the two function keys and the navigation. The instrument is compact, light and robust. This makes it suitable for use on a construction site.

- 1 Display
- 2 Navigation
- 3 Reset key
- 4 Center of probe
- 5 LED indicator
- 6 Function key
- 7 On/off button
- 8 Battery compartment
- 9 Center line

Icon Based Menu System

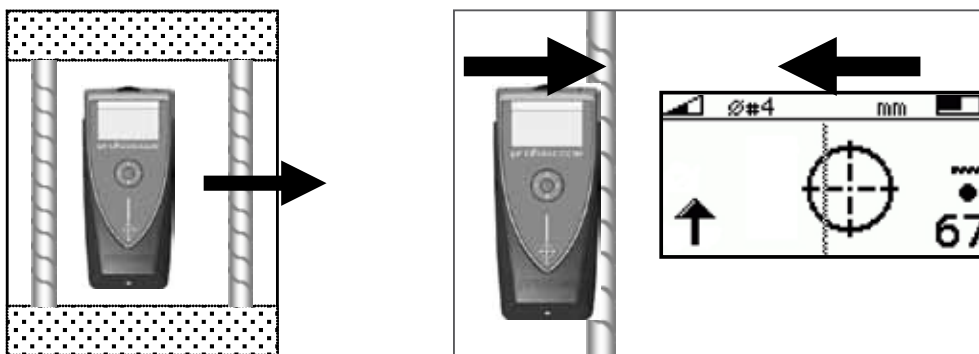
The menus are designed with intuitive icons to make the Profoscope language independent.



* Profoscope* only

Real-time Visualization of Rebars

The Profoscope makes rebar location faster and simpler than ever before. A rifle scope shows the position of the rebar beneath the instrument in real time. Every Profoscope is supplied with a start-up test kit as standard. This kit allows the user to familiarize him/herself with the operation of the instrument.



Locating a rebar

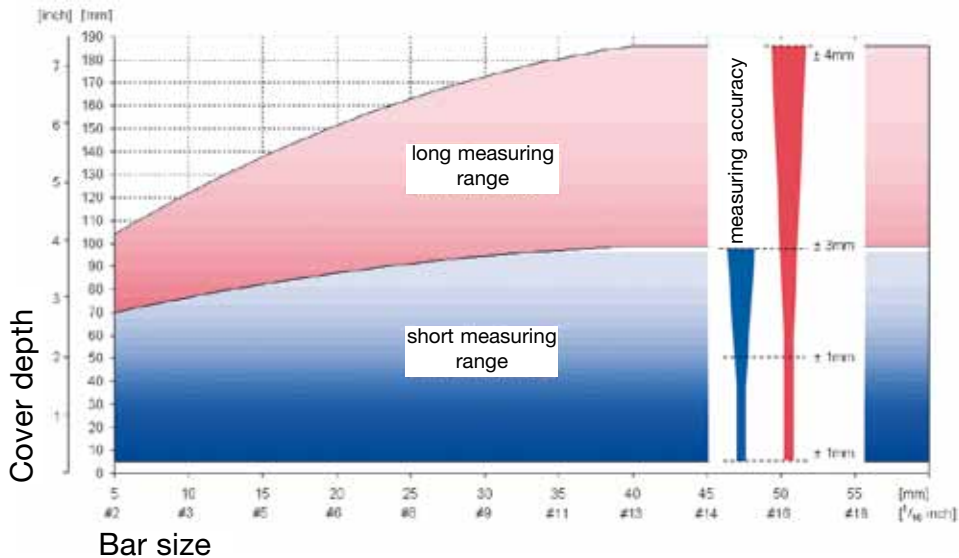


Test Kit



Measuring Range

This graph shows the maximum possible measuring range for the Profoscope, compliant with BS1881 part 204. Please note: This is based on a single rebar with sufficient clearance to neighboring rebars.



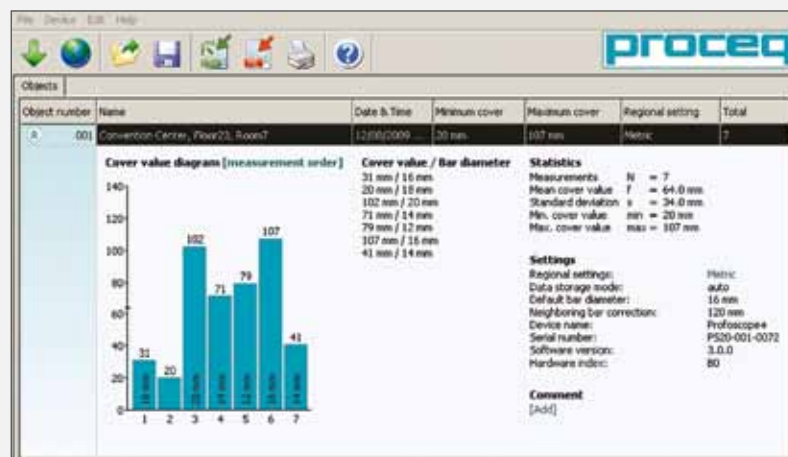
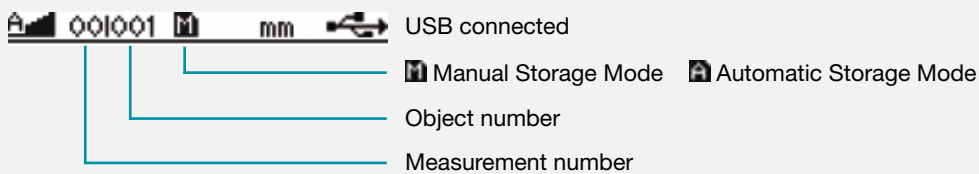
Advanced Features of Profoscope+

Manually recording the measurements of a test series is time consuming and is an unnecessary source of error. With the various data storage modes of the Profoscope+, taking notes is not necessary anymore.



Memory Function and Profolink

The graphic display of the Profoscope+ shows all necessary information while acquiring data on site.





The collected measurement values can then be analyzed with the Profolink PC tool.

Technical Information

| | |
|--|-------------------------------|
| Measuring Range | |
| See graph on previous page for maximum range relative to bar diameter. | |
| Power Supply | |
| Power source | 2 x 1.5 V AA (LR6) batteries |
| Voltage range | 3.6 V to 1.8 V |
| Current Consumption | |
| Power on, backlight off | ~ 50 mA |
| Power on, backlight on | ~ 200 mA |
| Sleep mode | ~ 10 mA |
| Power off | < 1 µA |
| Battery Lifetime | |
| Backlight off | > 50 h |
| Backlight on | > 15 h |
| Time Outs | |
| Sleep mode | 30 s |
| Auto shut down | 120 s |
| Environmental Conditions | |
| Temperature range | -10° to 60° C (14° to 140° F) |
| Humidity range | 0 to 100% rH |
| Protection class | IP54 |
| Standards and Regulations Applied | |
| BS1881 part 204; DIN1045; SN 505 262; DGZfP B2 | |
| Data Storage (Profoscope+ only) | |
| 49'500 measurements total (500 objects with 99 measurements) | |
| Compatibility ProfoLink: Windows 2000, XP, Vista, 7 | |

Ordering Information

| Unit | |
|---|--|
| Part Number | 391 10 000 |
|  | Profoscope unit consisting of: Profoscope incl. start-up test kit and accessories (batteries, canvas bag, carrying strap, chalk, documentation) |
| Part Number | 391 20 000 |
|  | Profoscope+ unit consisting of: Profoscope+ incl. start-up test kit and accessories (batteries, memory card, USB-cable, canvas bag, carrying strap, chalk, documentation, ProfoLink software) |

Accessories

| | |
|---|--|
| Standard Accessories delivered with the Profoscope / Profoscope+ | |
| 391 80 100 | Canvas bag |
| 350 74 025 | Battery type AA |
| 391 80 110 | Carrying strap |
| Additional Accessories delivered with the Profoscope+ only | |
| 391 80 803 | USB cable type A-mini B |
| 391 80 111 | Memory card microSD, 2GB |
| 391 80 112 | CD incl. ProfoLink |
| Optional Accessories | |
| 391 10 121S | Self-adhesive protection covers (Set of 3) |
| 390 00 270 | Calibration test block |
| 325 34 018S | Chalk (Set of 10) |

Service & Warranty Information

Proceq is committed to providing complete support for the Profoscope by means of our global service and support facilities. Furthermore, each Profoscope is backed by the standard Proceq 2-year warranty and extended warranty options.

| | |
|---|---|
| Standard Warranty | |
| • | Electronic portion of the instrument: 24 months |
| • | Mechanical portion of the instrument: 6 months |
| Extended Warranty | |
| 391 88 001 | Additional 1-year warranty* |
| 391 88 002 | Additional 2-year warranty* |
| 391 88 003 | Additional 3-year warranty* |
| * An extended warranty of one, two or three years can be purchased at time of order or within 90 days thereafter. | |



Subject to change without notice. All information contained in this documentation is presented in good faith and believed to be correct. Proceq SA makes no warranties and excludes all liability as to the completeness and/or accuracy of the information. For the use and application of any product manufactured and/or sold by Proceq SA explicit reference is made to the particular applicable operating instructions.

Head Office

Proceq SA
Ringstrasse 2
CH-8603 Schwerzenbach
Switzerland
Phone: +41 (0)43 355 38 00
Fax: +41 (0)43 355 38 12
info@proceq.com
www.proceq.com

